

PART OF E. 1/2 OF SECTION 18, T.6N., R.2E., S.L.B. & M.

HUNTSVILLE SURVEY

BLOCK 2 PLAT B

SCALE 1" = 200'

TAXING UNIT: 35, 318

SEE PAGE 20

**FIRST ST.

SEE PAGE 13

PLAT A
SEE PAGE 10

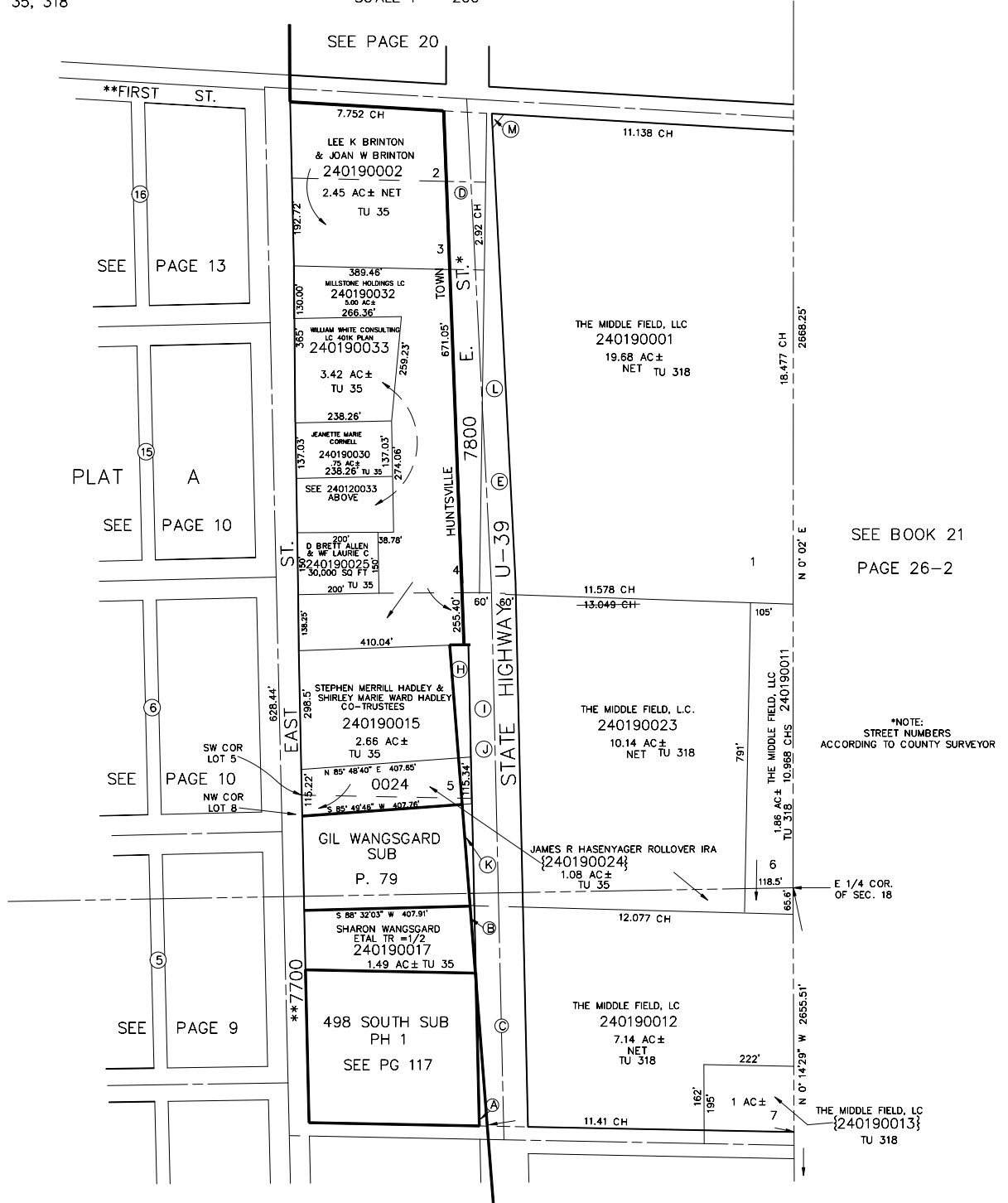
SEE PAGE 10

SEE PAGE 9

**STREET NAME CHANGE E#2195484

SEE PAGE 18

- (A) STATE ROAD COMMISSION OF UTAH 240190019 TU 35
- (B) SHARON WANGSGARD TR ETAL 240190027 727 SQ FT TU 35
- (C) STATE OF UTAH ROAD COMMISSION 240190021 TU 318
- (D) STATE ROAD COMMISSION OF UTAH 240190003 TU 318
- (E) STATE OF UTAH ROAD COMMISSION 240190020 TU 318
- (H) STEPHEN MERRILL HADLEY & SHIRLEY MARIE HADLEY CO-TRUSTEES 240190007 10,505 SQ FT TU 318
- (I) STATE OF UTAH 240190008 TU 318
- (J) STATE OF UTAH 240190010 TU 318
- (K) GILBERT A WANGSGARD & WF TRUDI 240190009 4005 SQ FT TU 318
- (L) STATE ROAD COMMISSION OF UTAH 240190006 1.28 AC± TU 318
- (M) UTAH DEPARTMENT OF TRANSPORTATION 240190029 533 SQ FT TU 318



SEE BOOK 21
PAGE 26-2

*NOTE:
STREET NUMBERS
ACCORDING TO COUNTY SURVEYOR

E 1/4 COR.
OF SEC. 18